



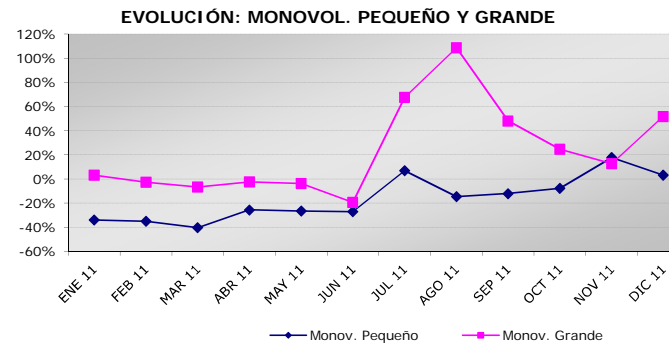
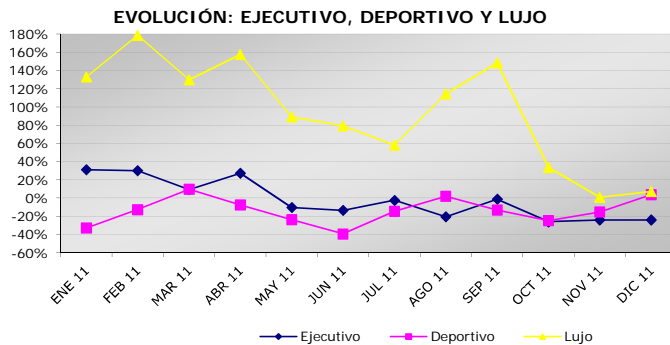
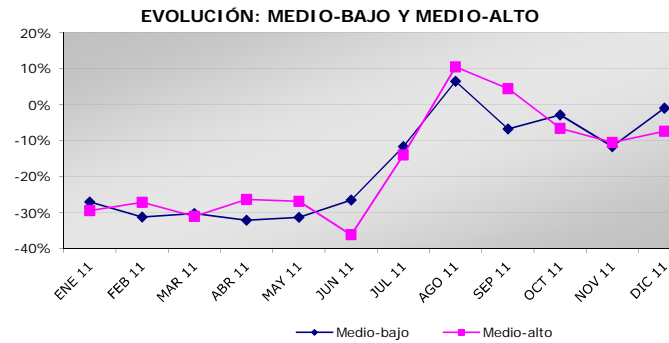
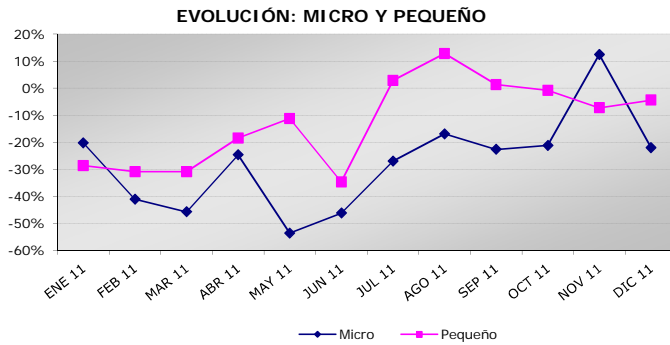
**RESUMEN DE MATRICULACIONES
DE TURISMOS Y TODO TERRENO**

Mes : DICIEMBRE 2011

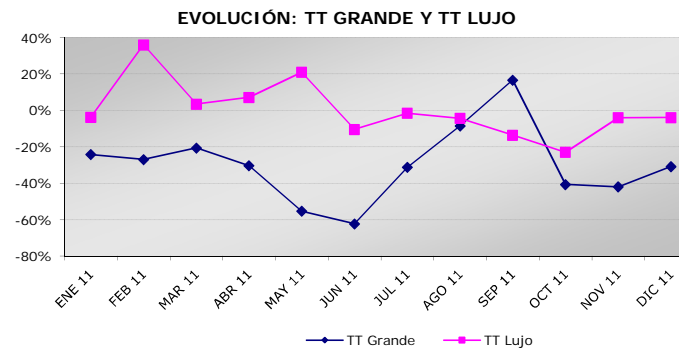
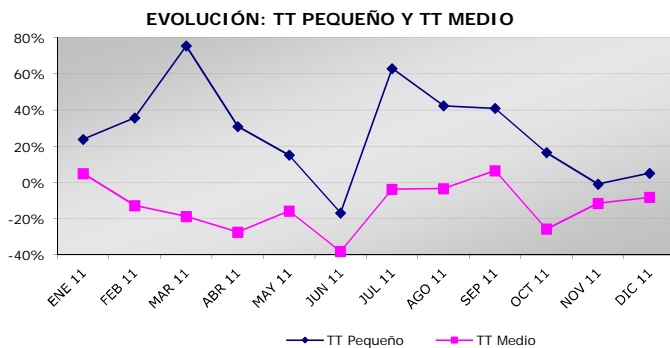
MATRICULACIONES DE TURISMOS (Segmentos). TOTAL ESPAÑA

	<i>Mes: Diciembre</i>					<i>Acumulado: Enero a Diciembre</i>				
	<i>2011</i>		<i>2010</i>		<i>% Var.</i>	<i>2011</i>		<i>2010</i>		<i>% Var.</i>
	<i>Volumen</i>	<i>Cuota</i>	<i>Volumen</i>	<i>Cuota</i>		<i>Volumen</i>	<i>Cuota</i>	<i>Volumen</i>	<i>Cuota</i>	
TOTAL	66.458	100%	68.942	100%	-3,60%	808.059	100%	982.015	100%	-17,71%
<i>Micro</i>	2.460	3,70%	3.152	4,57%	-21,95%	32.566	4,03%	48.471	4,94%	-32,81%
<i>Pequeño</i>	16.847	25,35%	17.626	25,57%	-4,42%	219.786	27,20%	264.157	26,90%	-16,80%
<i>Medio-bajo</i>	18.359	27,62%	18.539	26,89%	-0,97%	230.312	28,50%	290.060	29,54%	-20,60%
<i>Medio-alto</i>	8.113	12,21%	8.761	12,71%	-7,40%	103.165	12,77%	129.392	13,18%	-20,27%
<i>Ejecutivo</i>	1.058	1,59%	1.396	2,02%	-24,21%	13.899	1,72%	14.687	1,50%	-5,37%
<i>Deportivo</i>	562	0,85%	542	0,79%	3,69%	7.051	0,87%	8.401	0,86%	-16,07%
<i>Lujo</i>	166	0,25%	155	0,22%	7,10%	2.456	0,30%	1.341	0,14%	83,15%
<i>Monov. Pequeño</i>	7.756	11,67%	7.517	10,90%	3,18%	84.650	10,48%	105.849	10,78%	-20,03%
<i>Monov. Grande</i>	1.354	2,04%	892	1,29%	51,79%	14.156	1,75%	12.719	1,30%	11,30%
<i>TT Pequeño</i>	3.052	4,59%	2.903	4,21%	5,13%	30.659	3,79%	25.082	2,55%	22,24%
<i>TT Medio</i>	5.455	8,21%	5.943	8,62%	-8,21%	55.604	6,88%	65.617	6,68%	-15,26%
<i>TT Grande</i>	465	0,70%	672	0,97%	-30,80%	4.602	0,57%	6.961	0,71%	-33,89%
<i>TT Lujo</i>	811	1,22%	844	1,22%	-3,91%	9.153	1,13%	9.278	0,94%	-1,35%

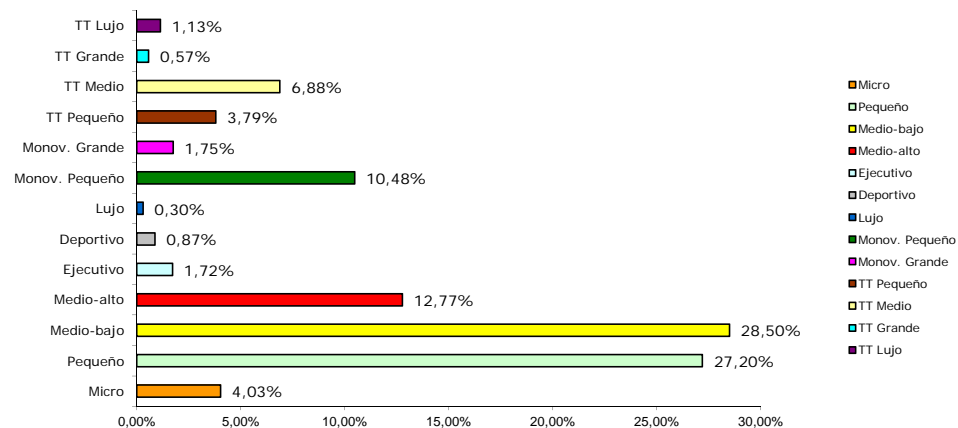
MATRICULACIONES DE TURISMOS (Segmentos). TOTAL ESPAÑA



MATRICULACIONES DE TURISMOS (Segmentos). TOTAL ESPAÑA



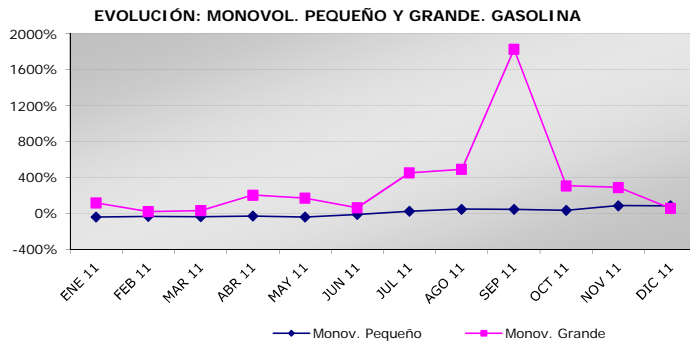
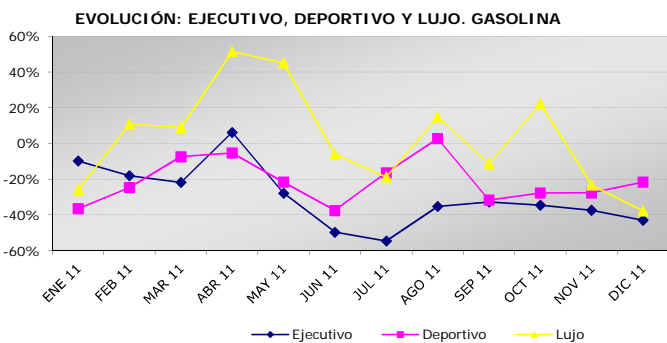
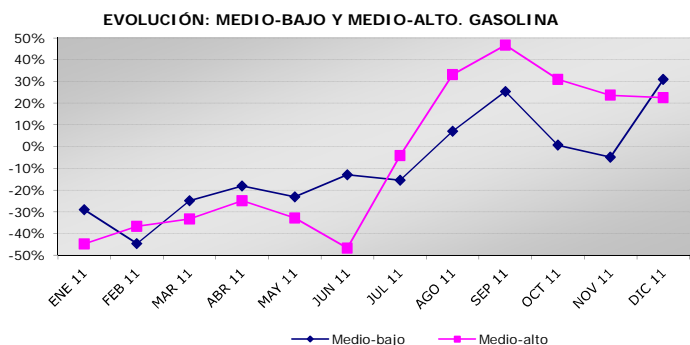
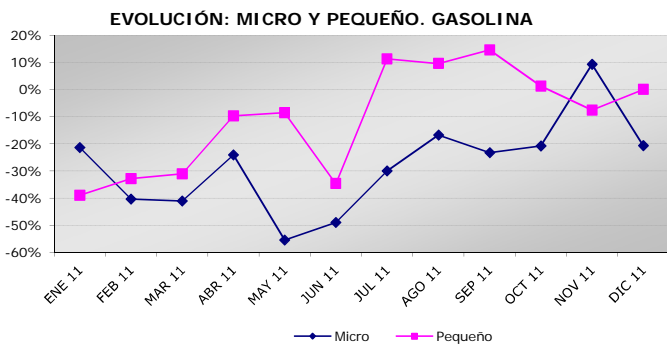
REPARTO DE SEGMENTOS ACUMULADO



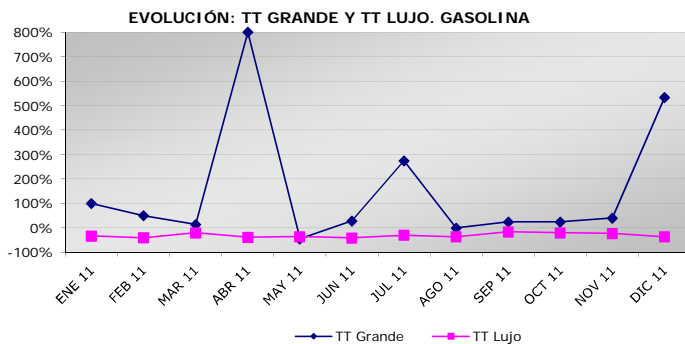
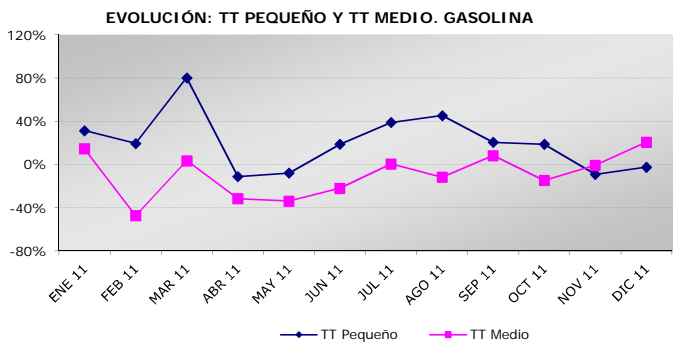
MATRICULACIONES DE TURISMOS (Segmentos). GASOLINA. TOTAL ESPAÑA

	<i>Mes: Diciembre</i>					<i>Acumulado: Enero a Diciembre</i>				
	<i>2011</i>		<i>2010</i>		<i>% Var.</i>	<i>2011</i>		<i>2010</i>		<i>% Var.</i>
	<i>Volumen</i>	<i>Cuota</i>	<i>Volumen</i>	<i>Cuota</i>		<i>Volumen</i>	<i>Cuota</i>	<i>Volumen</i>	<i>Cuota</i>	
TOTAL	19.544	100%	18.322	100%	6,67%	239.799	100%	288.109	100%	-16,77%
<i>Micro</i>	2.066	10,57%	2.605	14,22%	-20,69%	27.973	11,67%	41.840	14,52%	-33,14%
<i>Pequeño</i>	9.040	46,25%	9.039	49,33%	0,01%	114.789	47,87%	135.590	47,06%	-15,34%
<i>Medio-bajo</i>	4.629	23,69%	3.538	19,31%	30,84%	57.558	24,00%	67.368	23,38%	-14,56%
<i>Medio-alto</i>	1.188	6,08%	970	5,29%	22,47%	13.308	5,55%	15.741	5,46%	-15,46%
<i>Ejecutivo</i>	61	0,31%	107	0,58%	-42,99%	932	0,39%	1.384	0,48%	-32,66%
<i>Deportivo</i>	224	1,15%	286	1,56%	-21,68%	3.289	1,37%	4.231	1,47%	-22,26%
<i>Lujo</i>	23	0,12%	37	0,20%	-37,84%	460	0,19%	456	0,16%	0,88%
<i>Monov. Pequeño</i>	1.186	6,07%	645	3,52%	83,88%	11.111	4,63%	11.527	4,00%	-3,61%
<i>Monov. Grande</i>	42	0,21%	27	0,15%	55,56%	711	0,30%	265	0,09%	168,30%
<i>TT Pequeño</i>	654	3,35%	670	3,66%	-2,39%	5.811	2,42%	5.039	1,75%	15,32%
<i>TT Medio</i>	339	1,73%	281	1,53%	20,64%	2.723	1,14%	3.103	1,08%	-12,25%
<i>TT Grande</i>	19	0,10%	3	0,02%	533,33%	106	0,04%	59	0,02%	79,66%
<i>TT Lujo</i>	73	0,37%	114	0,62%	-35,96%	1.028	0,43%	1.506	0,52%	-31,74%

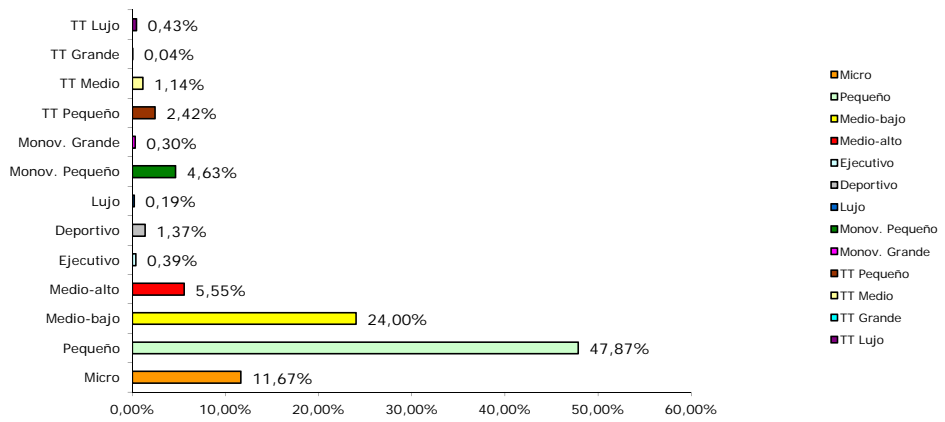
MATRICULACIONES DE TURISMOS (Segmentos). GASOLINA. TOTAL ESPAÑA



MATRICULACIONES DE TURISMOS (Segmentos). GASOLINA. TOTAL ESPAÑA



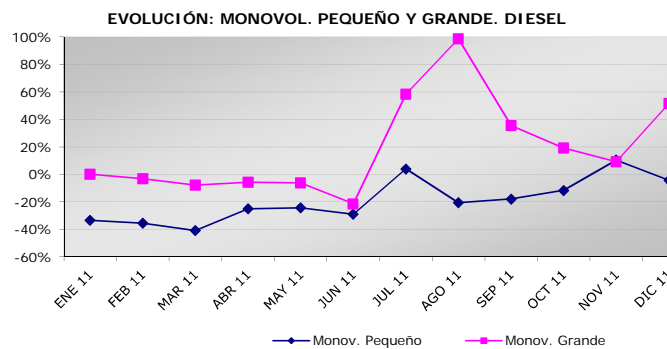
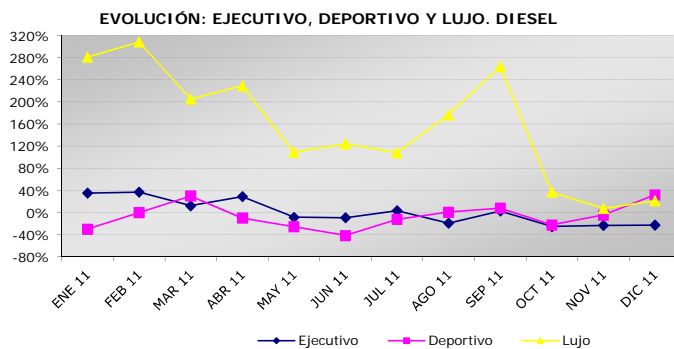
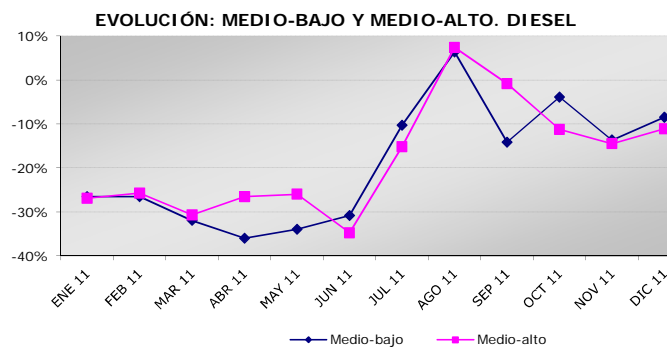
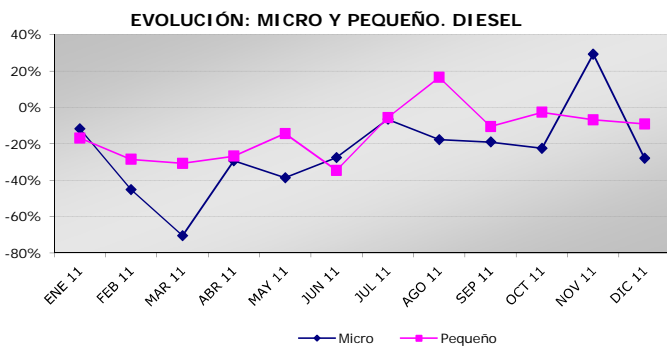
REPARTO DE SEGMENTOS ACUMULADO. GASOLINA



MATRICULACIONES DE TURISMOS (Segmentos). DIESEL. TOTAL ESPAÑA

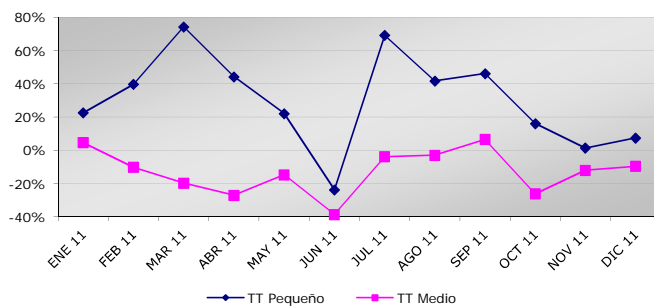
	<i>Mes: Diciembre</i>					<i>Acumulado: Enero a Diciembre</i>				
	<i>2011</i>		<i>2010</i>		<i>% Var.</i>	<i>2011</i>		<i>2010</i>		<i>% Var.</i>
	<i>Volumen</i>	<i>Cuota</i>	<i>Volumen</i>	<i>Cuota</i>		<i>Volumen</i>	<i>Cuota</i>	<i>Volumen</i>	<i>Cuota</i>	
TOTAL	46.914	100%	50.620	100%	-7,32%	568.260	100%	693.906	100%	-18,11%
<i>Micro</i>	394	0,84%	547	1,08%	-27,97%	4.593	0,81%	6.631	0,96%	-30,73%
<i>Pequeño</i>	7.807	16,64%	8.587	16,96%	-9,08%	104.997	18,48%	128.567	18,53%	-18,33%
<i>Medio-bajo</i>	13.730	29,27%	15.001	29,63%	-8,47%	172.754	30,40%	222.692	32,09%	-22,42%
<i>Medio-alto</i>	6.925	14,76%	7.791	15,39%	-11,12%	89.857	15,81%	113.651	16,38%	-20,94%
<i>Ejecutivo</i>	997	2,13%	1.289	2,55%	-22,65%	12.967	2,28%	13.303	1,92%	-2,53%
<i>Deportivo</i>	338	0,72%	256	0,51%	32,03%	3.762	0,66%	4.170	0,60%	-9,78%
<i>Lujo</i>	143	0,30%	118	0,23%	21,19%	1.996	0,35%	885	0,13%	125,54%
<i>Monov. Pequeño</i>	6.570	14,00%	6.872	13,58%	-4,39%	73.539	12,94%	94.322	13,59%	-22,03%
<i>Monov. Grande</i>	1.312	2,80%	865	1,71%	51,68%	13.445	2,37%	12.454	1,79%	7,96%
<i>TT Pequeño</i>	2.398	5,11%	2.233	4,41%	7,39%	24.848	4,37%	20.043	2,89%	23,97%
<i>TT Medio</i>	5.116	10,91%	5.662	11,19%	-9,64%	52.881	9,31%	62.514	9,01%	-15,41%
<i>TT Grande</i>	446	0,95%	669	1,32%	-33,33%	4.496	0,79%	6.902	0,99%	-34,86%
<i>TT Lujo</i>	738	1,57%	730	1,44%	1,10%	8.125	1,43%	7.772	1,12%	4,54%

MATRICULACIONES DE TURISMOS (Segmentos). DIESEL. TOTAL ESPAÑA

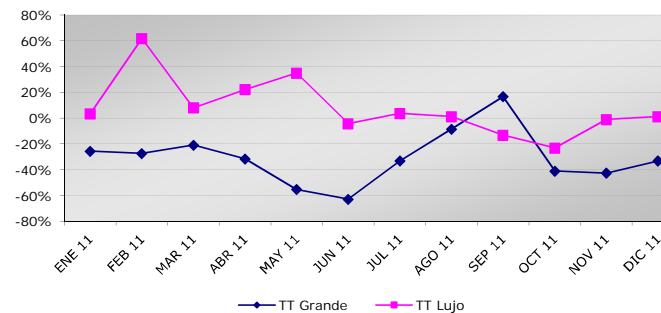


MATRICULACIONES DE TURISMOS (Segmentos). DIESEL. TOTAL ESPAÑA

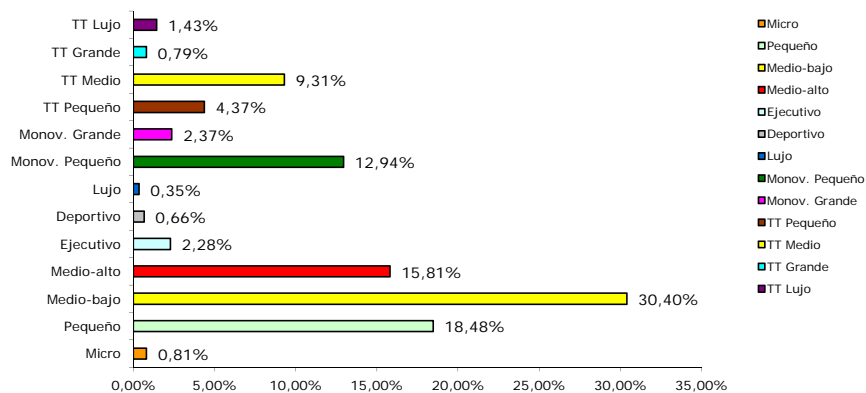
EVOLUCIÓN: TT PEQUEÑO Y TT MEDIO. DIESEL



EVOLUCIÓN: TT GRANDE Y TT LUJO. DIESEL



REPARTO DE SEGMENTOS ACUMULADO. DIESEL



MATRICULACIONES DE TURISMOS (CC.AA.). TOTAL ESPAÑA

	<i>Mes: Diciembre</i>					<i>Acumulado: Enero a Diciembre</i>				
	<i>2011</i>		<i>2010</i>		<i>%Var.</i>	<i>2011</i>		<i>2010</i>		<i>%Var.</i>
	<i>Volumen</i>	<i>Cuota</i>	<i>Volumen</i>	<i>Cuota</i>		<i>Volumen</i>	<i>Cuota</i>	<i>Volumen</i>	<i>Cuota</i>	
TOTAL	66.458	100%	68.942	100%	-3,60%	808.059	100%	982.015	100%	-17,71%
ANDALUCIA	7.469	11,24%	8.812	12,78%	-15,24%	91.381	11,31%	128.413	13,08%	-28,84%
ARAGON	1.575	2,37%	1.703	2,47%	-7,52%	15.461	1,91%	20.944	2,13%	-26,18%
ASTURIAS	1.287	1,94%	1.245	1,81%	3,37%	13.641	1,69%	17.883	1,82%	-23,72%
BALEARES	1.817	2,73%	1.560	2,26%	16,47%	25.936	3,21%	26.473	2,70%	-2,03%
CANARIAS	3.090	4,65%	3.272	4,75%	-5,56%	33.467	4,14%	34.270	3,49%	-2,34%
CANTABRIA	711	1,07%	905	1,31%	-21,44%	8.083	1,00%	10.657	1,09%	-24,15%
CASTILLA LA MANCHA	2.040	3,07%	2.191	3,18%	-6,89%	23.465	2,90%	34.979	3,56%	-32,92%
CASTILLA LEON	2.490	3,75%	2.804	4,07%	-11,20%	27.678	3,43%	40.752	4,15%	-32,08%
CATALUÑA	10.945	16,47%	10.757	15,60%	1,75%	119.944	14,84%	146.742	14,94%	-18,26%
CEUTA Y MELILLA	176	0,26%	186	0,27%	-5,38%	2.080	0,26%	2.639	0,27%	-21,18%
COMUNIDAD VALENCIANA	6.179	9,30%	6.011	8,72%	2,79%	83.611	10,35%	98.607	10,04%	-15,21%
EXTREMADURA	924	1,39%	969	1,41%	-4,64%	10.137	1,25%	15.925	1,62%	-36,35%
GALICIA	3.287	4,95%	4.362	6,33%	-24,64%	33.238	4,11%	50.250	5,12%	-33,85%
LA RIOJA	390	0,59%	381	0,55%	2,36%	3.797	0,47%	4.755	0,48%	-20,15%
MADRID	18.865	28,39%	18.547	26,90%	1,71%	262.688	32,51%	275.286	28,03%	-4,58%
MURCIA	1.545	2,32%	1.534	2,23%	0,72%	15.761	1,95%	21.632	2,20%	-27,14%
NAVARRA	818	1,23%	920	1,33%	-11,09%	8.081	1,00%	11.925	1,21%	-32,23%
PAIS VASCO	2.850	4,29%	2.783	4,04%	2,41%	29.610	3,66%	39.883	4,06%	-25,76%

MATRICULACIONES DE TURISMOS ALQUILADORES (CC.AA.). TOTAL ESPAÑA

	<i>Mes: Diciembre</i>					<i>Acumulado: Enero a Diciembre</i>				
	<i>2011</i>		<i>2010</i>		<i>%Var.</i>	<i>2011</i>		<i>2010</i>		<i>%Var.</i>
	<i>Volumen</i>	<i>Cuota</i>	<i>Volumen</i>	<i>Cuota</i>		<i>Volumen</i>	<i>Cuota</i>	<i>Volumen</i>	<i>Cuota</i>	
TOTAL	5.031	100%	6.598	100%	-23,75%	141.147	100%	135.339	100%	4,29%
ANDALUCIA	77	1,53%	240	3,64%	-67,92%	3.774	2,67%	3.817	2,82%	-1,13%
ARAGON	6	0,12%	6	0,09%	0,00%	117	0,08%	146	0,11%	-19,86%
ASTURIAS	5	0,10%	4	0,06%	25,00%	125	0,09%	159	0,12%	-21,38%
BALEARES	617	12,26%	331	5,02%	86,40%	11.619	8,23%	8.661	6,40%	34,15%
CANARIAS	1.058	21,03%	1.353	20,51%	-21,80%	12.426	8,80%	10.975	8,11%	13,22%
CANTABRIA	0	0,00%	0	0,00%	---	3	0,00%	20	0,01%	-85,00%
CASTILLA LA MANCHA	1	0,02%	8	0,12%	-87,50%	276	0,20%	270	0,20%	2,22%
CASTILLA LEON	4	0,08%	8	0,12%	-50,00%	204	0,14%	210	0,16%	-2,86%
CATALUÑA	97	1,93%	229	3,47%	-57,64%	1.650	1,17%	1.757	1,30%	-6,09%
CEUTA Y MELILLA	0	0,00%	0	0,00%	---	0	0,00%	5	0,00%	-100,00%
COMUNIDAD VALENCIANA	592	11,77%	242	3,67%	144,63%	24.290	17,21%	19.687	14,55%	23,38%
EXTREMADURA	0	0,00%	3	0,05%	-100,00%	14	0,01%	29	0,02%	-51,72%
GALICIA	5	0,10%	4	0,06%	25,00%	204	0,14%	239	0,18%	-14,64%
LA RIOJA	2	0,04%	0	0,00%	---	13	0,01%	49	0,04%	-73,47%
MADRID	2.457	48,84%	4.054	61,44%	-39,39%	85.072	60,27%	86.154	63,66%	-1,26%
MURCIA	29	0,58%	16	0,24%	81,25%	370	0,26%	476	0,35%	-22,27%
NAVARRA	10	0,20%	10	0,15%	0,00%	140	0,10%	116	0,09%	20,69%
PAIS VASCO	71	1,41%	90	1,36%	-21,11%	850	0,60%	2.569	1,90%	-66,91%

MATRICULACIONES DE TURISMOS (TOP 20). TOTAL ESPAÑA

	<i>Mes: Diciembre</i>					<i>Acumulado: Enero a Diciembre</i>					
	<i>2011</i>		<i>2010</i>		<i>%Var.</i>	<i>2011</i>		<i>2010</i>		<i>%Var.</i>	
	<i>Volumen</i>	<i>Cuota</i>	<i>Volumen</i>	<i>Cuota</i>		<i>Volumen</i>	<i>Cuota</i>	<i>Volumen</i>	<i>Cuota</i>		
MEGANE	3.288	4,95%	2.873	4,17%	14,44%	MEGANE	35.597	4,41%	45.198	4,60%	-21,24%
IBIZA	2.590	3,90%	2.341	3,40%	10,64%	IBIZA	31.106	3,85%	39.905	4,06%	-22,05%
C4	2.482	3,73%	2.413	3,50%	2,86%	C4	28.825	3,57%	35.689	3,63%	-19,23%
QASHQAI	1.836	2,76%	2.356	3,42%	-22,07%	QASHQAI	24.374	3,02%	30.050	3,06%	-18,89%
LEON	1.766	2,66%	1.491	2,16%	18,44%	GOLF	22.488	2,78%	27.293	2,78%	-17,61%
FOCUS	1.618	2,43%	1.040	1,51%	55,58%	LEON	22.404	2,77%	25.177	2,56%	-11,01%
308	1.548	2,33%	1.799	2,61%	-13,95%	POLO	20.913	2,59%	19.794	2,02%	5,65%
GOLF	1.524	2,29%	1.418	2,06%	7,48%	FOCUS	20.620	2,55%	21.612	2,20%	-4,59%
207	1.377	2,07%	1.632	2,37%	-15,63%	207	20.354	2,52%	29.046	2,96%	-29,92%
FIESTA	1.345	2,02%	1.543	2,24%	-12,83%	CORSA	19.915	2,46%	23.728	2,42%	-16,07%
ASTRA	1.230	1,85%	1.508	2,19%	-18,44%	ASTRA	17.762	2,20%	24.405	2,49%	-27,22%
CMAX	1.188	1,79%	679	0,98%	74,96%	FIESTA	17.424	2,16%	24.600	2,51%	-29,17%
AURIS	1.153	1,73%	864	1,25%	33,45%	308	17.206	2,13%	24.329	2,48%	-29,28%
ALTEA	1.130	1,70%	948	1,38%	19,20%	C3	15.505	1,92%	19.875	2,02%	-21,99%
POLO	1.100	1,66%	1.292	1,87%	-14,86%	CLIO	13.762	1,70%	19.738	2,01%	-30,28%
CORSA	1.005	1,51%	1.552	2,25%	-35,24%	PASSAT	12.035	1,49%	17.820	1,81%	-32,46%
C3	992	1,49%	1.382	2,00%	-28,22%	AURIS	11.580	1,43%	11.740	1,20%	-1,36%
IX35	974	1,47%	513	0,74%	89,86%	INSIGNIA	11.237	1,39%	13.157	1,34%	-14,59%
INSIGNIA	962	1,45%	1.248	1,81%	-22,92%	ALTEA	10.793	1,34%	15.080	1,54%	-28,43%
CLIO	949	1,43%	1.232	1,79%	-22,97%	A3	10.064	1,25%	13.928	1,42%	-27,74%